

Cotton Face Mask with Pelon Fusible Interfacing

Materials:

100% Cotton

(if not available can be substituted with cotton/poly blend) – do NOT use knit fabrics

Interfacing

Light to medium weight fusible interfacing

Elastic

1/8 or 1/4 Inch

Flexible sewing wire (18-24 guage works)

You can also use floral wire (20 guage), jewelry wire

Cutting instructions:

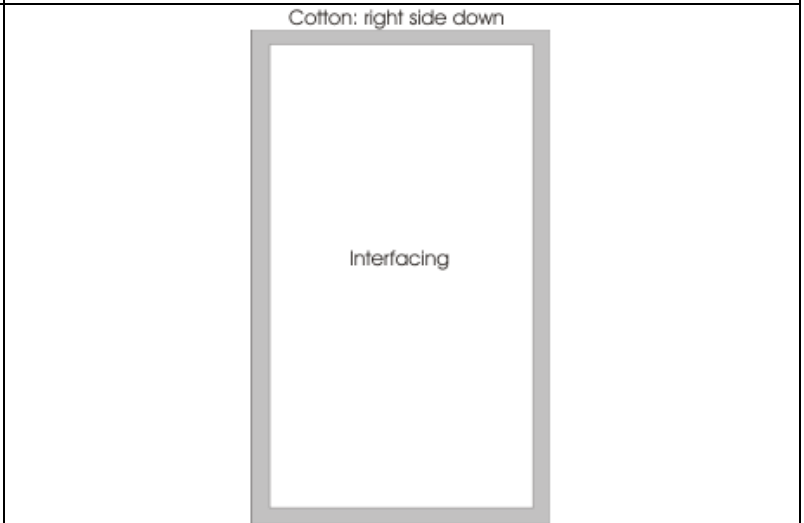
<p>Large:</p> <ul style="list-style-type: none"> • Cut one piece of cotton measuring 15” x 9” • Cut one piece of interfacing 14” x 8” • Cut two 7” strips of elastic • Cut one 5” strip of wire 	<p>Small:</p> <ul style="list-style-type: none"> • Cut one piece of cotton measuring 14” x 8” • Cut one piece of interfacing 13” x 7” • Cut two 6” strips of elastic • Cut one 5” strip of wire
---	---

Assembly Instructions:

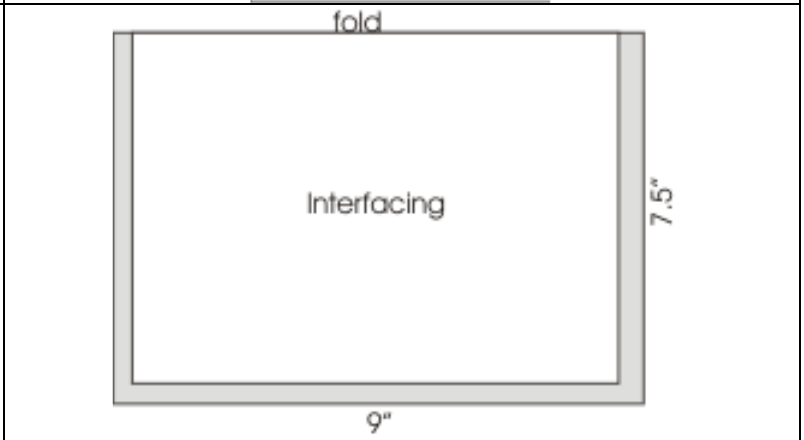
Lay your cotton fabric, right (print) side down, in “portrait” mode (short edge = top and bottom/long edge = sides)

Center your interfacing, glue side down, leaving ½ border all around

Fuse the interfacing to the cotton using a cover cloth. Setting: high & steam



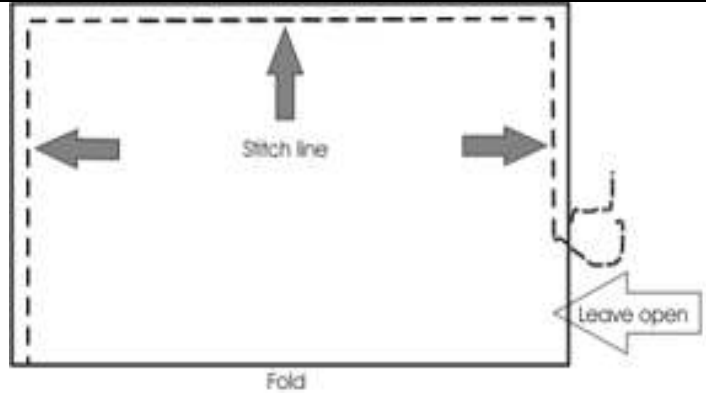
Turn your fabric over, right (print) side up. Fold your fabric in half so that the interfacing is showing.



Cotton Face Mask with Pelon Fusible Interfacing

Turn your fabric so that the fold side is on the bottom.

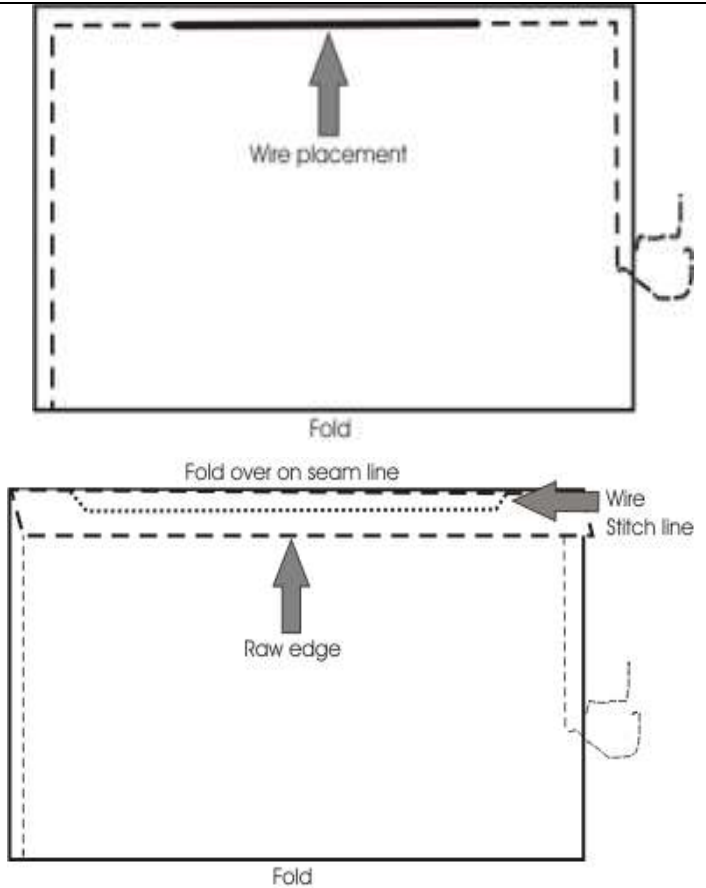
Stitch around the edges (1/2 seam) starting at the fold on one side and ending 2-3" from the fold on the other. (dotted line)



Place your flexible wire in the center of the top seam allowance.

Using your seam allowance as a guide, fold the top edge down, over the wire, and iron in place

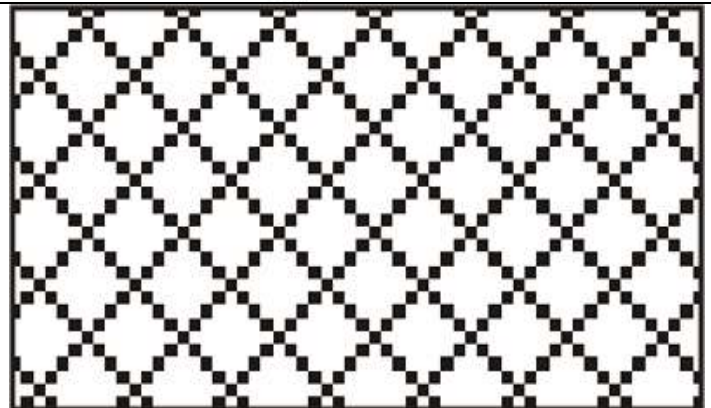
Stitch wire in place



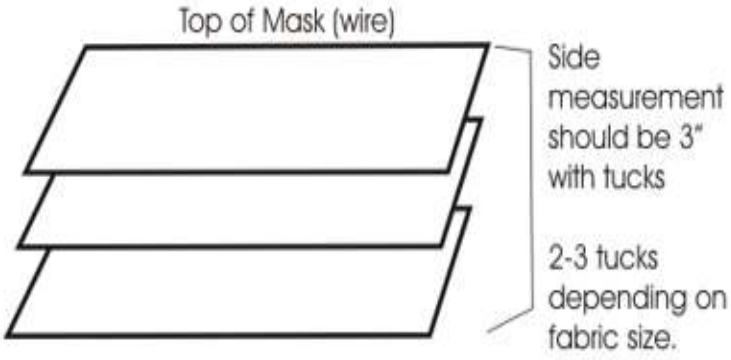
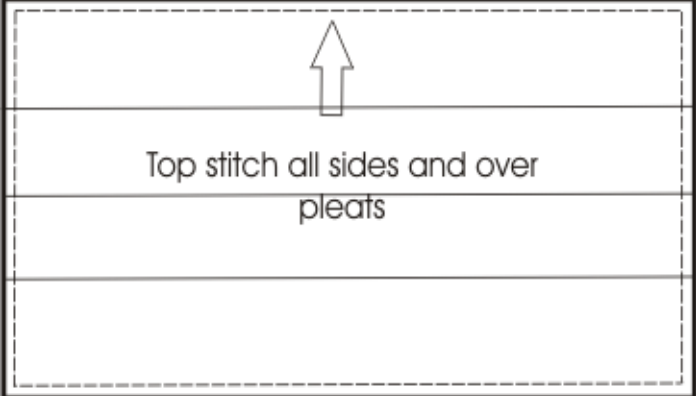
Turn your fabric inside out.

The edge with the wire will be the top of your mask.

Fold the open fabric in to hem. Iron flat.



Cotton Face Mask with Pelon Fusible Interfacing

<p>Pin 2 – 3 tucks (pleats) on each side of the mask.</p> <p>Make sure the folds of the tucks are facing down, toward the bottom of the mask</p>	 <p>Top of Mask (wire)</p> <p>Side measurement should be 3" with tucks</p> <p>2-3 tucks depending on fabric size.</p>
<p>Top stitch all edges of the mask, holding tucks (pleats) in place</p>	 <p>Top stitch all sides and over pleats</p>
<p>Stitch the ends of your elastic to the corners of your mask</p>	